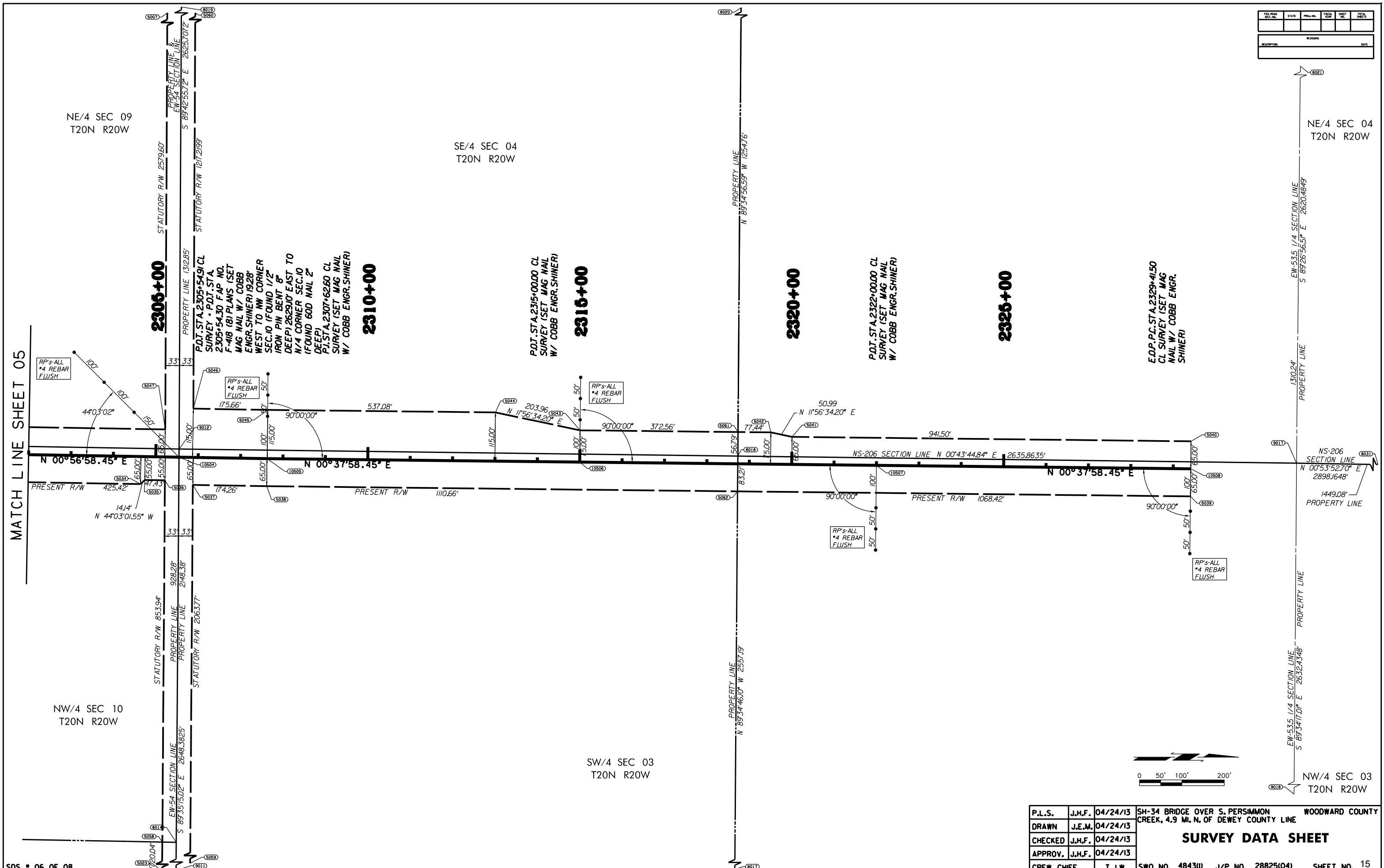
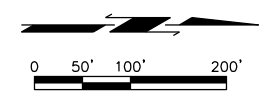


REV. NO.	DATE	DESCRIPTION



MATCH LINE SHEET 05



P.L.S.	J.H.F.	04/24/13	SH-34 BRIDGE OVER S. PERSIMMON CREEK, 4.9 MI. N. OF DEWEY COUNTY LINE	WOODWARD COUNTY
DRAWN	J.E.M.	04/24/13	SURVEY DATA SHEET	
CHECKED	J.H.F.	04/24/13		
APPROV.	J.H.F.	04/24/13		
CREW CHIEF	T.J.W.			
SWO NO. <u>4843W</u> J/P NO. <u>28825(04)</u> SHEET NO. <u>15</u>				